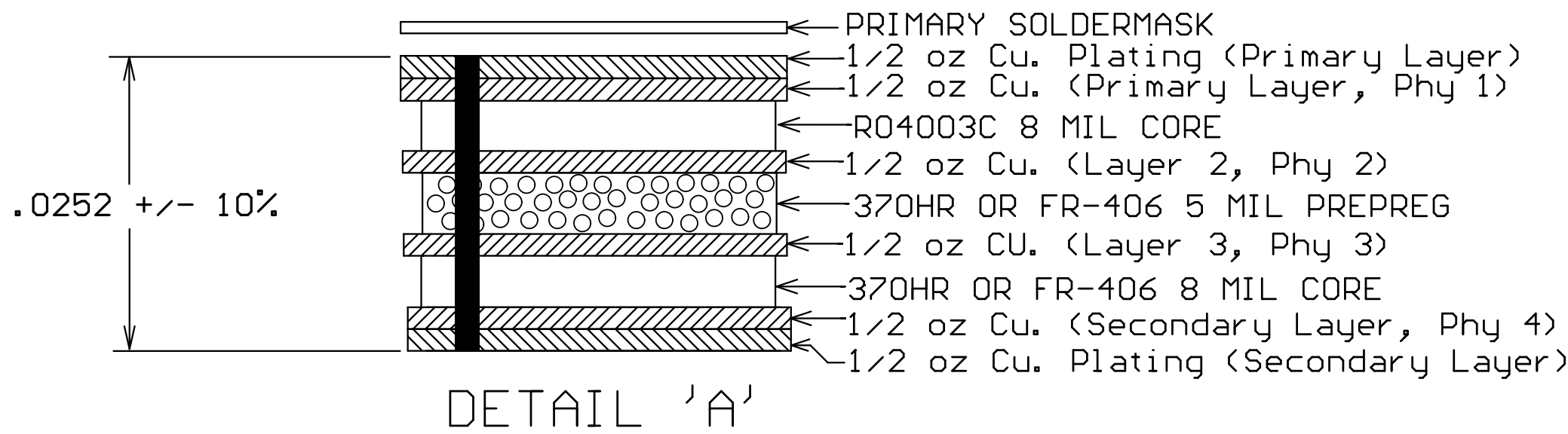


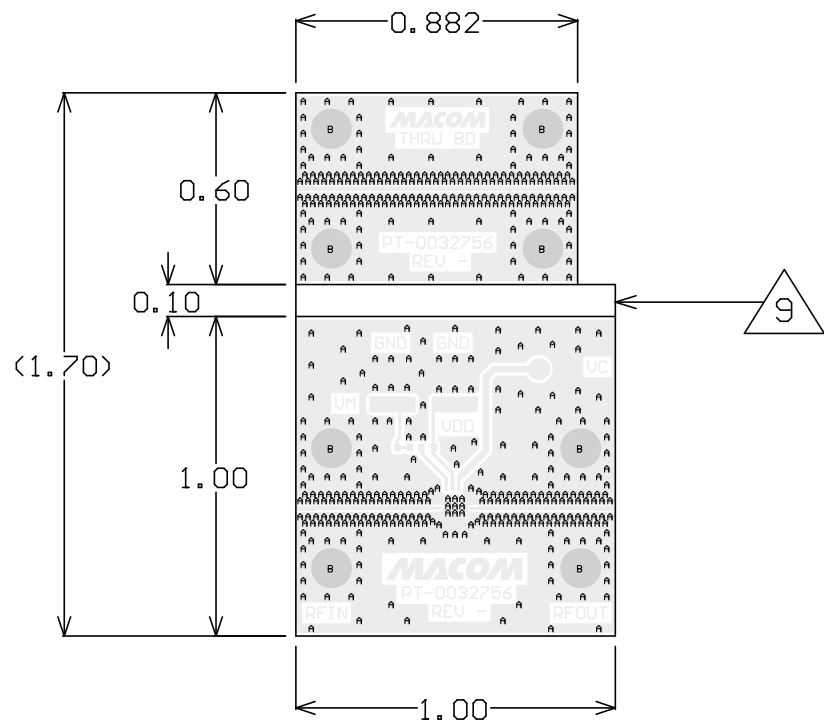
BOARD DIELECTRIC / COPPER STACKUP
FINISHED BOARD THICKNESS
(EXCLUDING PRIMARY SOLDERMASK)



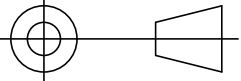
Symbol	Count	FHS	Tolerance	Plated	Hole Type	Drill Layer Pair
A	483	10.00mil	+3/-10mil	PTH	Round	Top Layer - Bottom Layer
B	8	78.00mil	+/-3mil	PTH	Round	Top Layer - Bottom Layer
	491 Total					

NOTES:

- MATERIAL:
R04003C 8 MIL CORE THICKNESS.
STARTING COPPER FOIL ON LAYERS SHALL BE 1/2 OZ.
TOTAL COPPER THICKNESS ON PRIMARY AND SECONDARY SHALL BE 1 OZ.
MATERIAL STACKUP, THICKNESS, AND STARTING COPPER FOIL PER DETAIL 'A'.
- FINISH: PRIMARY AND SECONDARY SIDE FINISH;
ELECTROLESS NICKEL/IMMERSION GOLD (ENIG) PER IPC-4552.
ELECTROLESS NICKEL: 118-236 MICRO-INCHES
IMMERSION GOLD: 2-8 MICRO-INCHES
THERE SHALL BE NO PITS, PIN HOLES, SCRATCHES OR NODULES WITHIN EXPOSED METAL AREAS
STACKUP REPRESENTS FINISHED THICKNESS.
- PCB SHALL BE BUILT PER IPC-6012 CLASS 2 AND CONFORM TO IPC-A-600 CLASS 2 LATEST REVISIONS.
- HOLE SPECIFICATIONS:
A. ALL HOLES TO BE PLATED THRU UNLESS OTHERWISE SPECIFIED.
B. ALL FINISHED DRILL HOLE SIZES APPLY AFTER PLATING.
C. ALL 10 MIL FHS TO BE FILLED WITH CONDUCTIVE VIA MATERIAL, CAPPED OVER, AND PLANARIZE FLAT.
D. COPPER PLATING IN THROUGH HOLES WILL BE 0.001" AVERAGE WITH AN ABSOLUTE MINIMUM OF 0.0007".
E. DIMENSIONS SHOWN ARE FOR LOCATION OF 0,0 FOR THE DRILL FILE.
- MINIMUM LINE WIDTH AND SPACING SHALL BE 0.005".
- ELECTRONIC DATA IS EQUAL TO THE FINISHED LINE WIDTH.
- NO SILKSCREEN ON PCB.
- LPI SOLDER MASK COATING SHALL CONFORM TO IPC-SM-840, CLASS T. SMOBC. PRIMARY SIDE ONLY. COLOR GREEN.
- BOARDS SHALL BE ROUTED OUT AND SHIPPED SEPARATELY.
- GROUND PLANE ON ALL LAYERS MUST EXTEND TO EDGE OF BOARD UNLESS OTHERWISE NOTED.
EXPOSED COPPER ON BOARD EDGE SHALL BE ACCEPTABLE.
- ALL CPWG LINES ON LAYER 1 ARE CONTROLLED IMPEDANCE. A 13.5 MIL LINE WITH A 5.2 MIL SPACING SHALL BE 50 OHMS +/- 5% WITH REFERENCE TO THE GROUND PLANE WITH A DISTANCE OF 8 MIL FROM LAYER 2.
- ALL MATERIALS DESCRIBED IN THIS DOCUMENT/DRAWING SHALL BE IN COMPLIANCE WITH AND CONTAIN NO SUBSTANCES RESTRICTED OR REQUIRING SPECIAL RECLAMATION UNDER THE LATEST RoHS, WEEE OR ELV DIRECTIVES.



Primary Layer (Phy 1)

<div>UNLESS OTHERWISE SPECIFIED INTERPRET DRAWING PER ASME Y14.5 DO NOT SCALE THIS DRAWING</div>	<div>UNLESS OTHERWISE SPECIFIED DIMENSIONS ARE IN INCHES</div>		<div><div>MACOM®</div><div>WWW.MACOM.COM</div></div>		
	<div>TOLERANCES ON</div>				
	<div>DECIMALS</div>	<div>ANGLES</div>			
<div>NOTE: THIS DRAW INCORPORATES THIRD ANGLE PROJECTION</div> <div></div>	<div>.X ±.1 .XX ±.02 .XXX ±.005 .XXXX ±.0005</div>	<div>±0.5</div>	<div>TITLE</div> <div>MAAV-011017 SMB</div>		
<div>MACOM Technology Solutions CONFIDENTIAL INFORMATION SUBJECT TO NDA</div>	<div>UNLESS OTHERWISE SPECIFIED</div>		<div>SIZE</div>	<div>DRAWING NO.</div>	<div>REVISION</div>
<div><div>The information contained in this document or material is the valuable and confidential property of MACOM Technology Solutions Holdings, Inc. and/or its subsidiaries or affiliates. Collectively, MACOM, provided to you subject to a non-disclosure agreement between you and MACOM solely for use in supporting MACOM's business as and to the extent MACOM authorizes in writing from time to time. This information shall be held in strictest confidence and shall not be reproduced, published, disclosed to others, or used for any purpose except as and to the extent specifically authorized by MACOM in a separate written agreement. If permission is granted for reproduction, this legend must be included in any and all copies. This document or material shall be promptly returned to MACOM or destroyed upon request, completion of the use for which it was made available to recipient, or termination of MACOM's relationship with recipient, whichever first occurs.</div></div>	<div>63/ ALL OVER</div>	<div>B</div>	<div>PT-0032756</div>	<div>-1</div>	
	<div>MATERIAL</div> <div>SEE NOTE 1</div>	<div>FINISH</div> <div>SEE NOTE 2</div>	<div>SCALE:</div> <div>1/1</div>	<div>PACKAGE TYPE:</div> <div>3mmPQFN50P-16LD</div>	<div>SHEET 1 OF 1</div>